

UC Merced

Update to the ETLG

February 8, 2016

Classroom Technology Initiatives

- Lifecycle planning to address digital display transition
 - Proposal going to the Space Advisory Committee for prioritization to upgrade 40-50 analog classrooms and conference rooms.
 - Update: 35 Panasonic LED projectors purchased replaced in small classrooms in January 2015
 - Analog & digital
 - System control emulation (it worked! serial pinout was different than Sharp, swapped).
 - The LED is rated at 20,000hrs, so reduced cost of consumables
 - Half the power (potentially 6-7 mWh per semester), less heat, and no mercury based lamps
 - No problems with these since installation.

Classroom Technology Initiatives

- New building projects
 - COB2 – Mid-may 2016 testing – Fall 2016 use
 - 4 lecture halls
 - 1 TEAL room (90 seat)
 - 6 classrooms (shared / tutoring at night)
 - All lampless – Panasonic laser projectors
 - <http://dc.campuscms.ucmerced.edu/cob2>
 - UC Merced 2020 project - <http://2020project.ucmerced.edu/>
- Update: AppleTV for untethered presentations (pilot)
 - They work (old generation), new AppleTV (lost some of the security and authentication requirements).
 - Still no Android or Windows (without a purchase)
- Evaluating VDI solutions for general computer lab access

Learning Management System

- CatCourses (Canvas) History
 - Taskforce reviewed Canvas. Presented to Academic Senate, received support.
 - 1.5yrs of Pilot use with mostly Writing Program courses
 - Approximately - 40 courses, 20 instructors, 700 students
 - Used a manually run script to generate course site and roster. Update roster on request.
 - Very little, no support provided. MWP provided peer support.
 - Budget approved during SAN/NAS outage. Contracted through Internet2 sole source agreement.
 - Spring 2015 was an early adopter period
 - Approximately 10% of courses
 - Summer 2015 more transition time

Learning Management System

- CatCourses (Canvas)
 - Full production as of Fall 2015
 - Script generates all courses, and all rosters.
 - Differential update script automatically runs every 30mins.
 - Turning Technologies Turning Point Cloud (add tool upon request)
 - Mid-semester/Final grades tool LTI built
 - New for Spring 2016
 - Profile pictures – URL pointer to database from campus card system
 - TurnItIn LTI – moved from TurnItIn Integration

Learning Management System

- CatCourses (Canvas)

- Next...

- GradeTool - adjustments and more features (registrar needs)
 - SubAccounts
 - Allow permissions for School instructional support staff
 - Allow LTI tools to be added at account level, but can turn off per subaccount
 - New UI in May (between Spring/Summer)
 - Project Sites transition to retire Sakai

Learning Management System

- Anticipated issues / changes (*from Spring 2015*)
 - *Transfer of resources/files from UCMCROPS to CatCourses will be manual.*
 - Sakai migration tool – evaluated but chose not to. Limited Sakai versions. Didn't map everything. Required stripping customizations.
 - Some push back but generally went well. Most instructors already had their files outside of Sakai. Quizzes could be exported/imported, but some work to finalize.
 - *Adapting to changes in communication from Email to Notifications*
 - A number of requests for the Sakai based mailing lists.
 - Very difficult for some to change approach.
 - Many/Most adapted with training and information.
 - *Official grading not available from CatCourses to Banner.*
 - *Mid-semester and final grades will need to be entered via the BLINK tool for Banner.*
 - Built a tool and rolled out during semester.

Learning Management System

- Anticipated issues / changes (cont.)
 - *TurningPoint clicker integration is limited compared to Sakai*
 - *For participant list generation and grading, instructors will have to use the new Turning cloud service.*
 - *Not a true LTI tool.*
 - *Manually add to site (for now), but the new TurningPoint Cloud service has gone well, and we're seeing more instructors using this.*
 - *Student photos will not be populated in the Roster.*
 - *Maybe the most requested item from instructors.*
 - *Completed for Spring 2016*
 - *Loss of integrated Course Evaluations tool (Writing Program)*
 - *Got Deans' agreement to standardize on Class Climate.*

Learning Management System

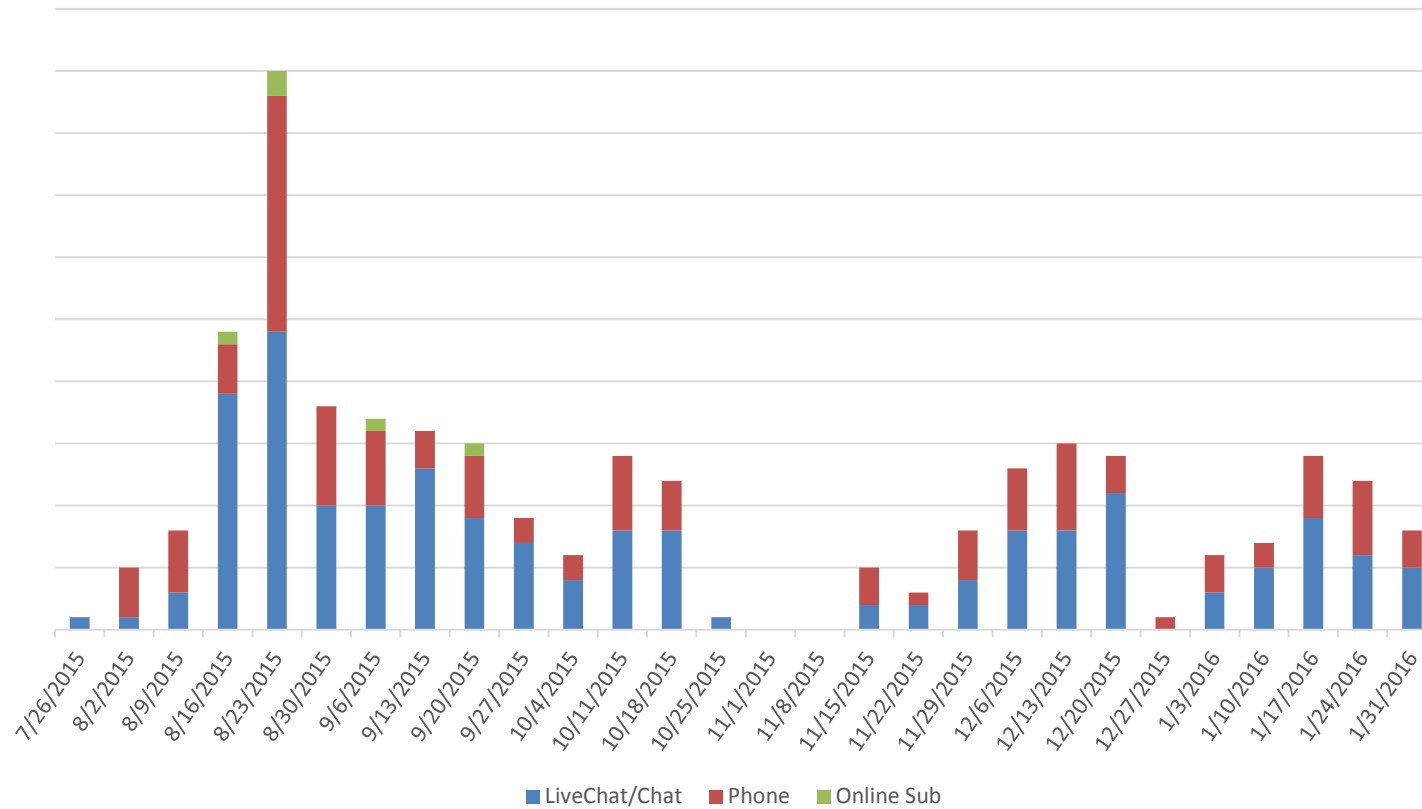
- Anticipated issues / changes (cont.)
 - *ePortfolios will not be available in the same way (Writing Program)*
 - Communicated new approach. These courses adapted to the built-in ePortfolio tool.
 - *Project sites for administrative use are being evaluated on a case-by-case basis*
 - Not top priority for roll out. Sakai still available for those with sites. No new Sakai sites.
 - Evaluate requests, based on needs. Created a separate sub-account space, so they don't impact analytics.

Learning Management System

- Anticipated issues / changes (*from Spring 2015*)
 - *Cross-listing of courses may no longer be done by import. Combining course sites will no longer be done by IT. Instructors now have access to tools to do so manually.*
 - Official cross-list courses get imported. Instructure support assists with combining courses. Also self-help guides available.
 - Still some unique cases that required our involvement to get what they needed.
 - *Support from UC Merced IT staff will be limited, but for now the vendor offers 24 Hour Live Support, every day of the year for Faculty.*
 - The vendor provided support has gone well for the most part.
 - More experience with tools and greater availability.
 - Has allowed us to focus on special case and training.

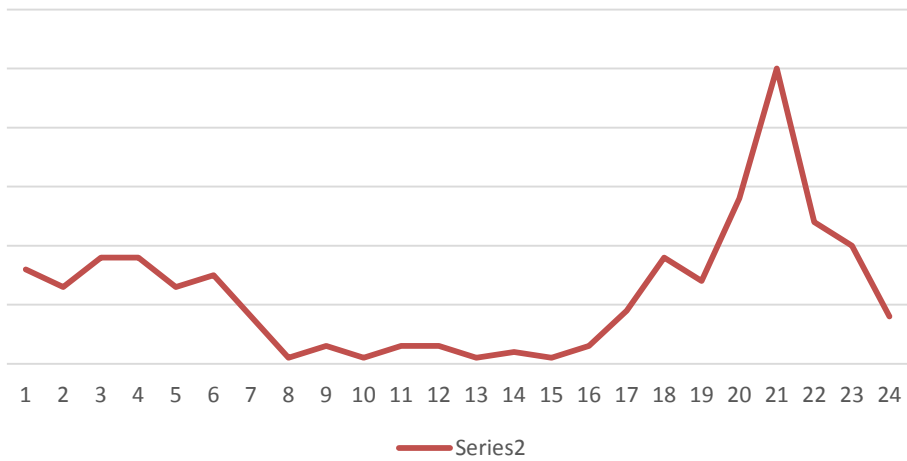
Learning Management Support

Tickets Opened - Weekly

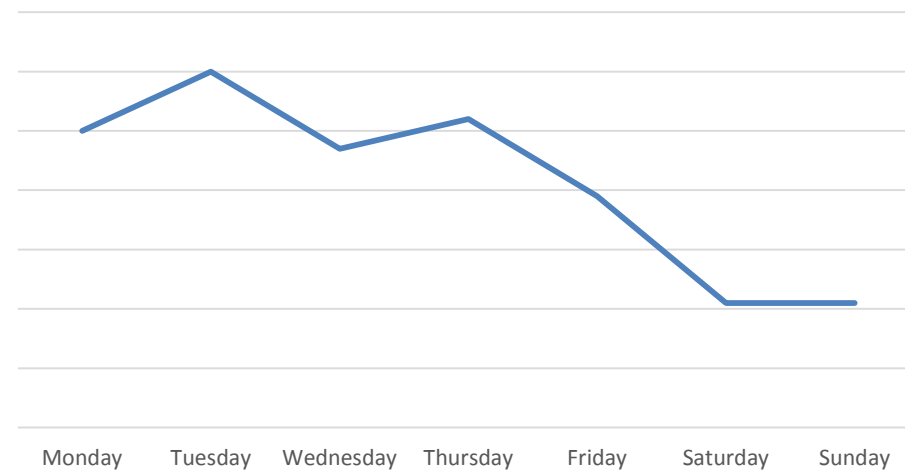


Learning Management Support

Cases by time of day



Cases by day of the week



Learning Management System Training

Type of Training	Fall 2015 Course Building	Fall 2015 Grading	Spring 2016 Course Building
General Sessions	32%	6%	n/a
Drop-In Sessions	3%	1%	n/a
One-on-Ones	9%	8%	3%
Online	36%	16%	3%

Quick Notes:

- Online was based on number of instructors with active participation in our training site on CatCourses.
- General sessions numbers included trainings asked for by departments/schools for new instructors. We had repeat instructors, so the numbers are inflated by that.
- Percentages are number of faculty attending out of 374 total faculty in Fall 2015.

Learning Management System Use

	Early Adopter		Production
	Spring 2015	Summer 2015	Fall 2015
Courses	117	43	1146
Teachers	102	37	503
Students	2848	912	6607
Assignments	2067	820	9828
Discussion Topics	1772	337	9827
Files Uploaded	4875	1594	22238
Media Recordings	57	6	1566